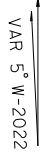
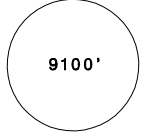
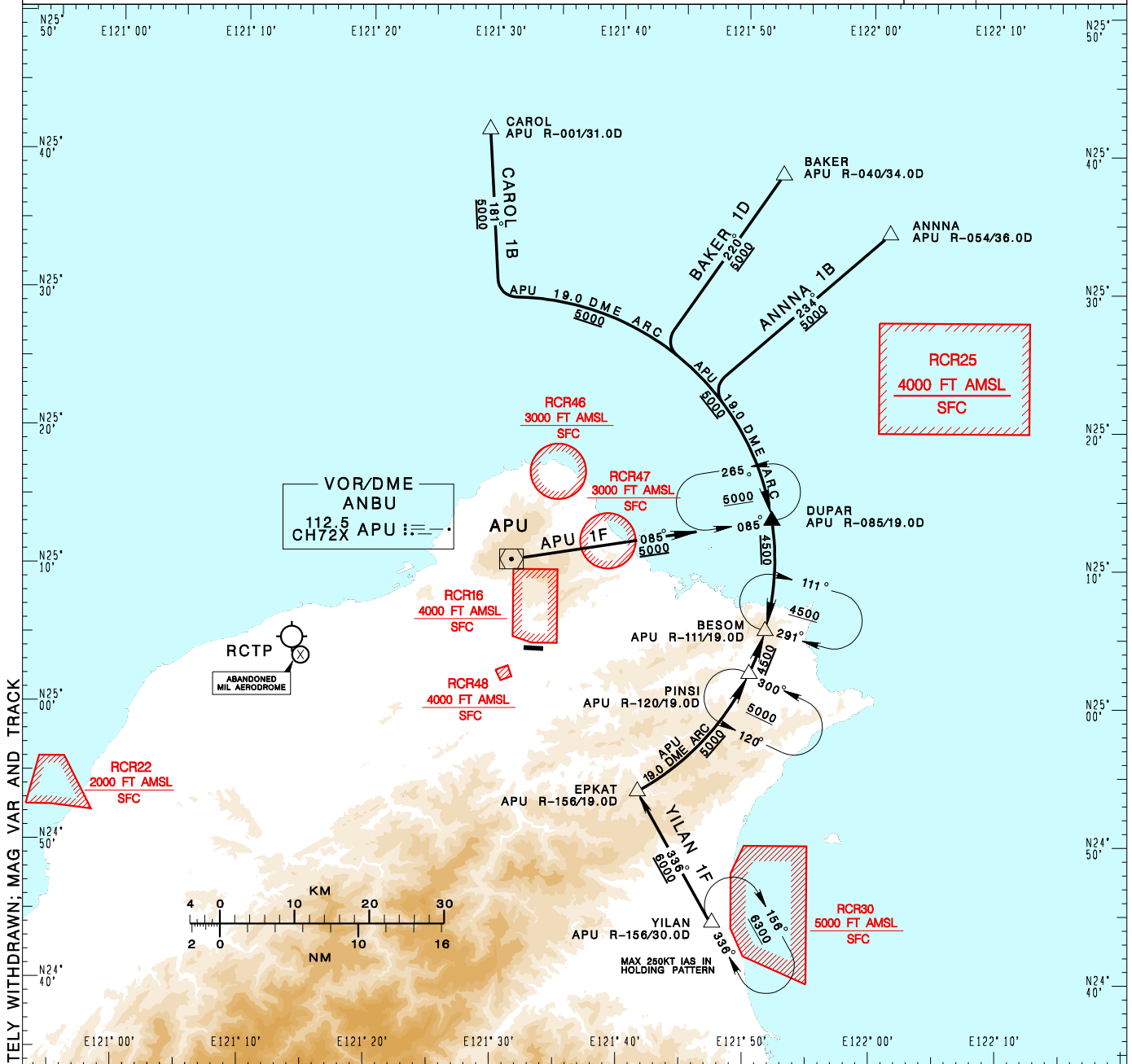


臺北/松山機場
TAIPEI/SONGSHAN AD

ANNNA 1B(RWY28)/APU 1F(RWY28)/BAKER 1D(RWY28)
CAROL 1B(RWY28)/YILAN 1F(RWY28)

RCSS STAR

TAIPEI ACC 125.5 123.6	TAIPEI APP 119.7 119.6 125.1	ATIS 127.4 341	  MSA APP 25NM	
Apt Elev: 18'		Trans Level: FL130		Trans Alt: 11,000'
BEARINGS ARE MAGNETIC; DISTANCES ARE NAUTICAL MILES; ELEVATIONS, HEIGHTS IN FEET				



CHANGES: RECHART: RCR49 COMPLETELY WITHDRAWN: MAG VAR AND TRACK

- ANNNA ONE BRAVO ARRIVAL
Depart ANNNA, track APU R-054, then join APU 19.0 DME arc to BESOM.
- ANBU ONE FOXTROT ARRIVAL
Depart APU, track APU R-085 to DUPAR, then join APU 19.0 DME arc to BESOM.
- BAKER ONE DELTA ARRIVAL
Depart BAKER, track APU R-040, then join APU 19.0 DME arc to BESOM.
- CAROL ONE BRAVO ARRIVAL
Depart CAROL, track APU R-001, then join APU 19.0 DME arc to BESOM.
- YILAN ONE FOXTROT ARRIVAL
Depart YILAN, track APU R-156 to EPKAT, then join APU 19.0 DME arc to BESOM.